

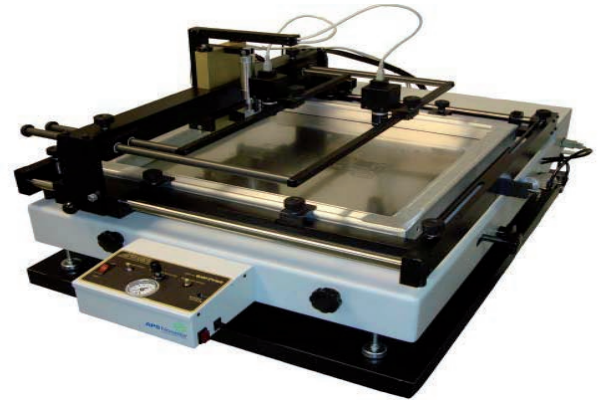
SPR-45VA *SMTrue™ Vision Assist* Stencil Printer

Your Economical Solution for:

Prototyping

Short to Medium Run, High Mix
Production Environments

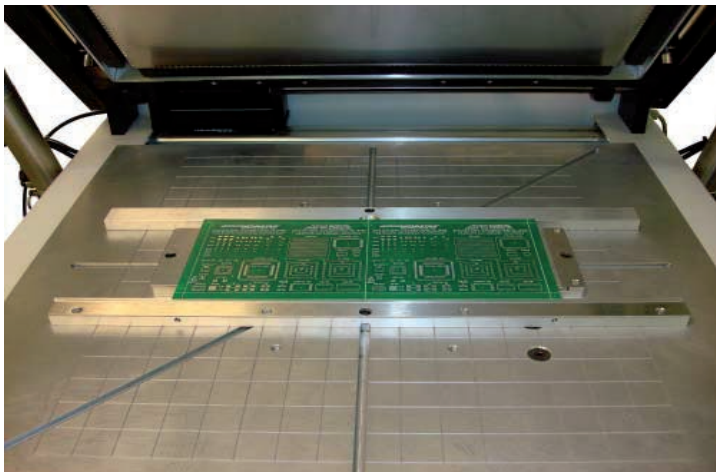
Printing for Ultra-fine QFPs, MicroBGAs,
and CSPs



- High Magnification - 10X *SMTrue Vision Assist* for precise alignment of components down to 12 mil pitch
- Ultra fast, convenient, single and double-sided PCB loading and unloading
- Accurate stencil to board alignment the first time...every time
- Repeatable fine X, Y, Z, and Theta positional adjustments

System Features

- *SMTrue Vision Assist* 10X magnification, axial alignment of stencil to board down to 12 mil ultra fine pitch, single or dual camera, software, communication cabling, and computer
- Pneumatic adjustable power sweep squeegee for printing with single or dual stroke
- Power frame lift for higher volume production
- Fine X, Y, and Theta adjustments for exact, repeatable stencil to board print alignment
- Single Z-axis self leveling adjustment
- Quick change spring loaded double sided PCB nesting kit
- PCB vacuum hold down (optional)
- Adjustable frame holder compatible with all tubular or cast 23" x 23" framed stencils
- Adjustable, reproducible angle-of-attack squeegee adjustments
- Dual squeegee holder (urethane or metal) with independent print force adjustment for clean, convenient applications of solder paste.

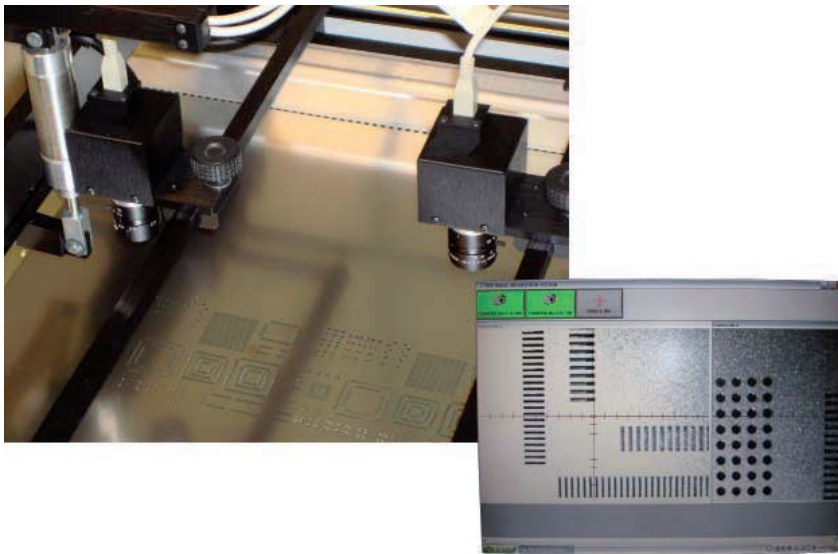


SPR-45VA Double Nesting Kit (optional) is spring loaded for quick board changes and enables stenciling of single and double sided PCB boards.

PRODUCT SPECIFICATIONS:

| | |
|-------------------------------|-----------------------------------------------|
| Printing Resolution | Down to 12 mil pitch components |
| Dual Squeegee | Yes |
| Urethane or Metal Squeegee | machine supplied with 2 of each type squeegee |
| Single or double pass | Yes |
| Linear squeegee guide | Automatic |
| Adjustable angle of attack | Yes |
| Adjustable squeegee pressure | Pneumatic |
| Adjustable squeegee speed | Pneumatic |
| Maximum print area | 16" x 18" (406mm x 457mm) |
| Compatible stencil frame size | up to 23" x 23" (584mm x 584mm) |
| Foil Frame compatibility | Yes |
| Automatic power frame lift | Yes |

| | |
|-----------------------------------------------|---------------------------------------------------|
| X & Y adjustment | $\pm 0.5000"$ (12.7mm) |
| Z axis adjustment | 0 to 5/8" (16mm) single knob, self-leveling |
| Theta adjustment | Single knob to ± 5 degrees |
| Clear Lexan® fixture for initial registration | Yes (X, Y, and Theta) |
| Nesting kits for single and double sided PCBs | Quick exchange, spring loaded |
| Vacuum hold down option | Yes |
| Outside frame dimensions | 23" x 23" (584mm x 584mm) |
| Air Pressure | 80 psi (5 bar) |
| System Dimensions (H x W x D) | 16" x 30" x 35" (406mm x 762mm x 889mm) |
| Height with stand option | 47" (1194mm) |
| Approximate Weight | 160 lbs (68kg) |
| Power | 120 VAC, 50/60Hz, 2Amp (220-240 VAC available) |



Dual cameras provide axial vision alignment of the PCB board to the stencil for precise delivery of solder paste.



Leasing Options Available...
For more information, phone us at 1-215-485-5663
or email us at sales@ddmnovastar.com